

VA DOT VDOT DI-1 Drop Inlet Steel Frame

104.01

OVA270100001

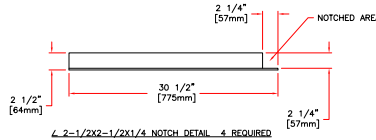
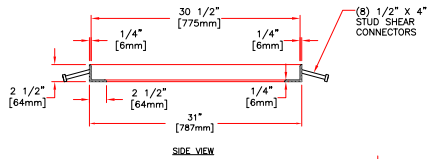
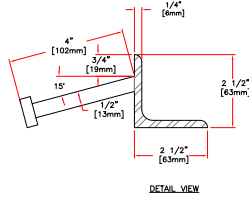
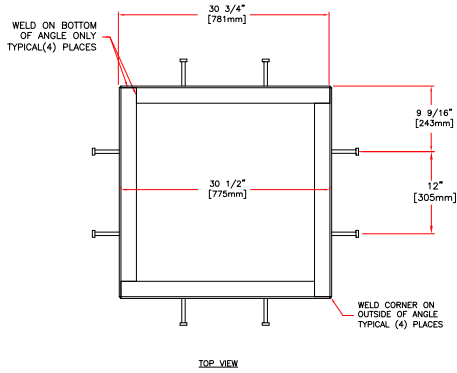


DI-1 Galvanized Steel Frame



02701660

Quantity: 1



Product Number

02701660

Design Features

- Materials
ASTM A-36
- Design Load
H-20 When properly cast In Concrete
- Open Area
N/A
- Coating
Galvanized
- √Designates Machined Surface

Certification

- Weight: 45 Lbs.
-
- Country of Origin: USA

Drawing Revision

08/07/2007 Designer: CJC
09/06/2013 Revised By: BDD

Disclaimer

Weights (lbs/kg), dimensions (inches/mm) and drawings provided for your guidance. We reserve the right to modify specifications without prior notice.
CONFIDENTIAL: This drawing is the property of EJ Group, Inc. and embodies confidential information, registered marks, patents, trade secret information, and/or know-how that is the property of EJ Group, Inc. Copyright © 2011 EJ Group, Inc. All rights reserved.

Contact
800 626 4653
ejco.com

Disclaimer

Weight (lbs./kg), dimensions (inches/mm) and drawings provided for your guidance. We reserve the right to modify specifications without prior notices

CONFIDENTIAL: This drawing is the property of EJ GROUP, Inc., and embodies confidential information, registered marks, patents, trade secret information, and/or know how that is the property of EJ GROUP, Inc. Copyright © 2015 EJ GROUP, Inc. All rights reserved

Contact
800 626 4653
ejco.com

Supplied By:



877-903-7246

www.trenchdrainsupply.com